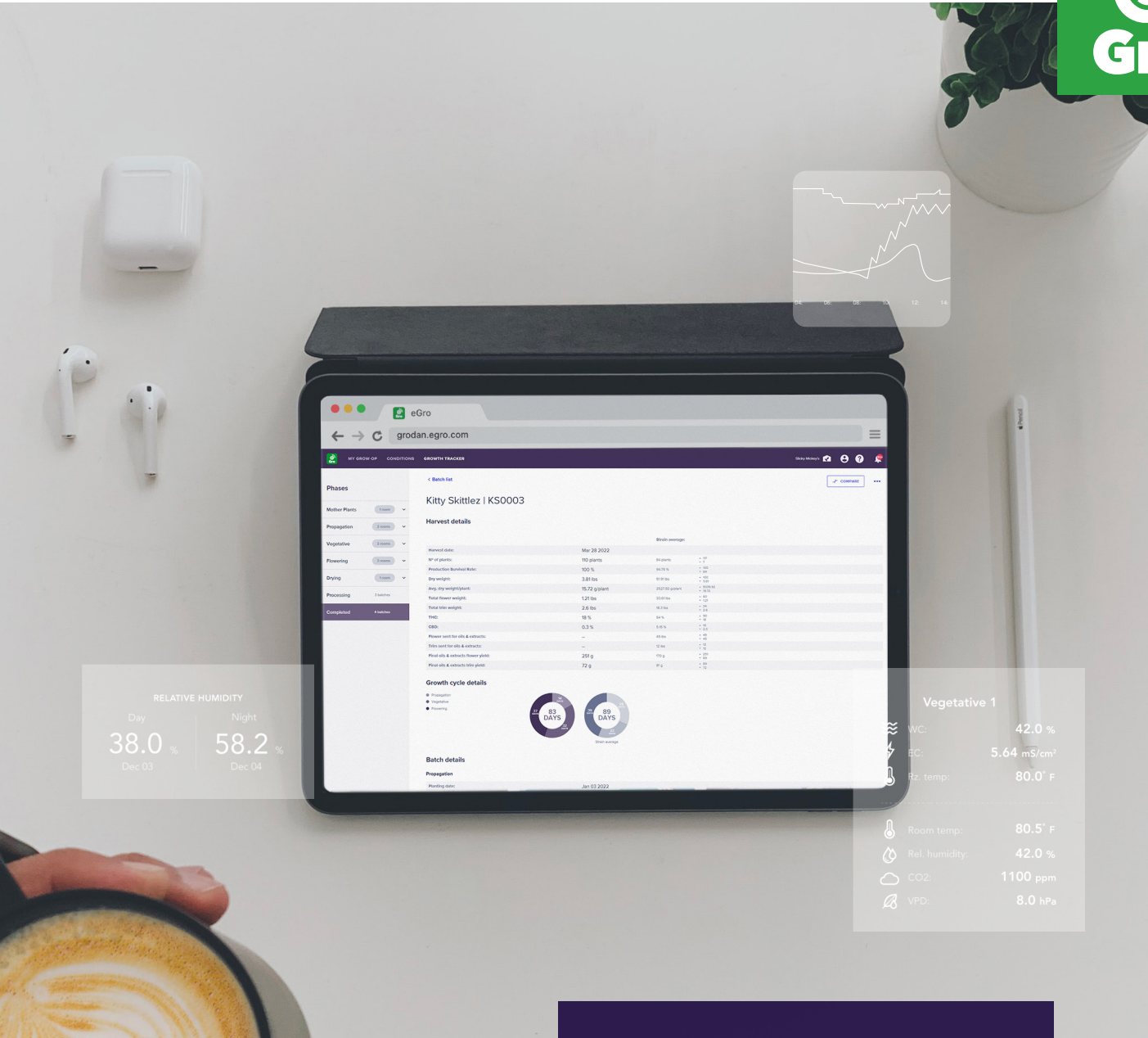


e-Gro Q3 Release How To Guide

For questions, please contact egro.support@grodan.com



RELATIVE HUMIDITY

Day	Night
38.0 %	58.2 %
Dec 03	Dec 04

Vegetative 1

WC:	42.0 %
EC:	5.64 mS/cm ²
Fz. temp:	80.0° F
Room temp:	80.5° F
Rel. humidity:	42.0 %
CO ₂ :	1100 ppm
VPD:	8.0 hPa

Introduction

e-Gro Q3 Release: Optimized user experience and insights into survival rates of your crop

We are well aware of the fact that the current times come with multiple challenges and uncertainties in your facility. Gas, energy, the inflation and the changing climate asks for even more flexibility and creativity to adapt to this changing environment. With the demanding optimization of growing strategies, the accuracy, predictability, and reliability of data are, therefore, more important than ever. The decisions you make today have a major impact on your results tomorrow.

As such, we aim to support you in the best way by releasing helpful updates available in e-Gro. This release focuses on the Growth tracker and the optimized Conditions module for an improved User Experience (UX).

What's new?

Conditions module for improved user experience

- Improved user experience to analyze your data more efficient.
- Optimized way to export your GroSens data

Growth tracker updates

- Newly added Survival rate parameter

Support center

- Growth tracker – manual

Optimized Conditions module for improved user experience

P3

Growth Tracker – Survival rates

P4

Complemented Support Center

P5

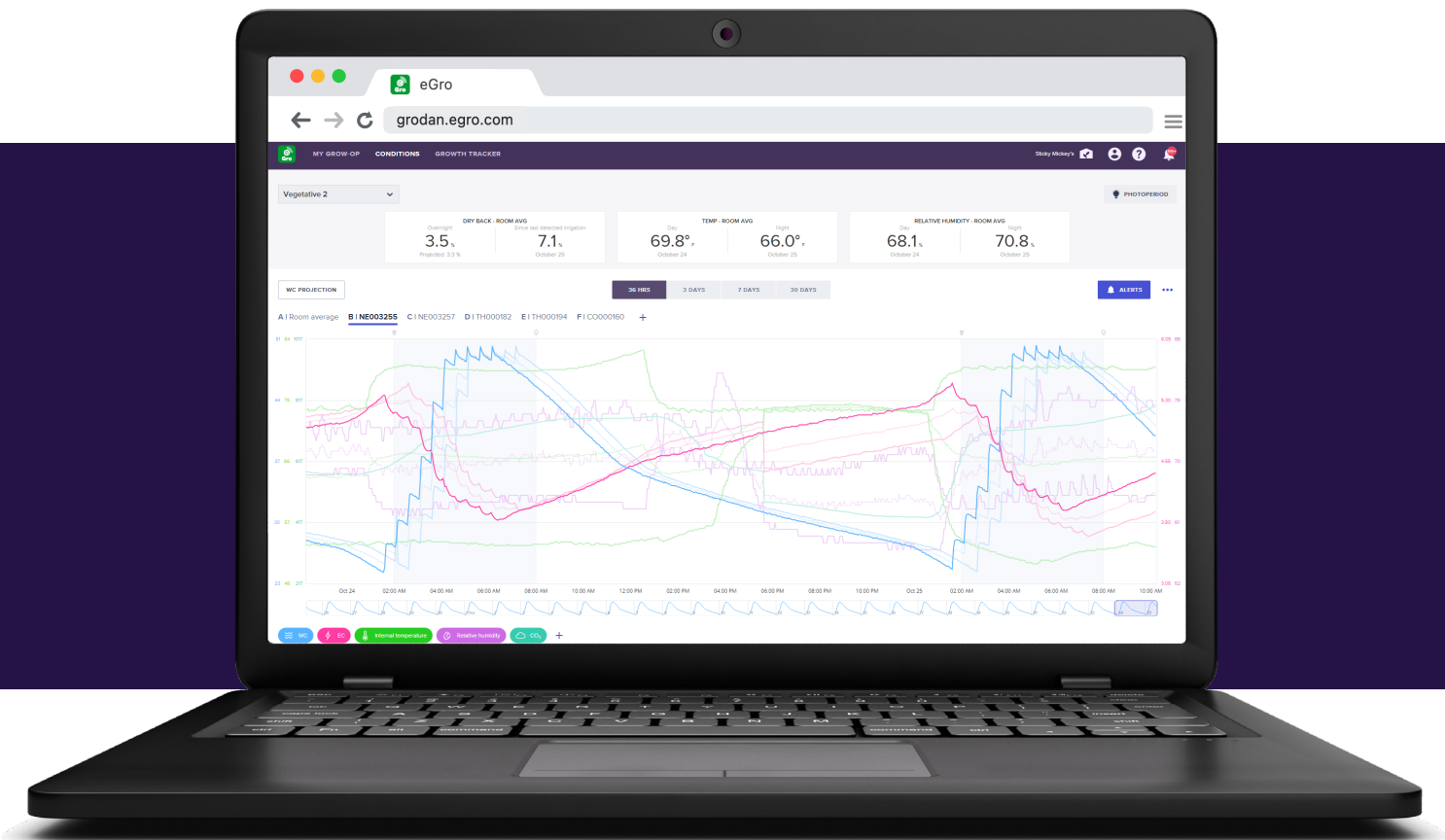
What's next?

P5

1

Optimized Conditions module for improved user experience

The Conditions module is a crucial feature e-Gro, which is why our Lead UX Eloy van der Harst deep-dived again into this module to show essential information in a better and more user-friendly way according to. This module enables you to analyze the rootzone and climate simultaneously to optimize your irrigation and crop strategies based on real-time, accurate data. It helps you maximize input, cost savings while optimizing your yield and crop performance. All improvements and updates are focused on an improved daily experience and way of working.



What's new?

Easier way to analyze your data more efficient

To read your data quickly and intuitively from the graphical display we added **identifiers** and making the lines on the graph selectable. Once a line is selected the accompanying sensor and data points become highlighted, allowing you to quickly focus on the data you are interested in without moving your mouse.



Adding end dates to historical sensors, keeping historical data available

To help you interpret the data even better, we keep the historical data of a sensor in the previous area when moving the sensor to a new area. The update enables you to view the historical sensor data, making the data active and visible in the graph up until 30 days. With this update, your historical averages will not change anymore because of the sensor movement.

Faster and clearer way to download graph data

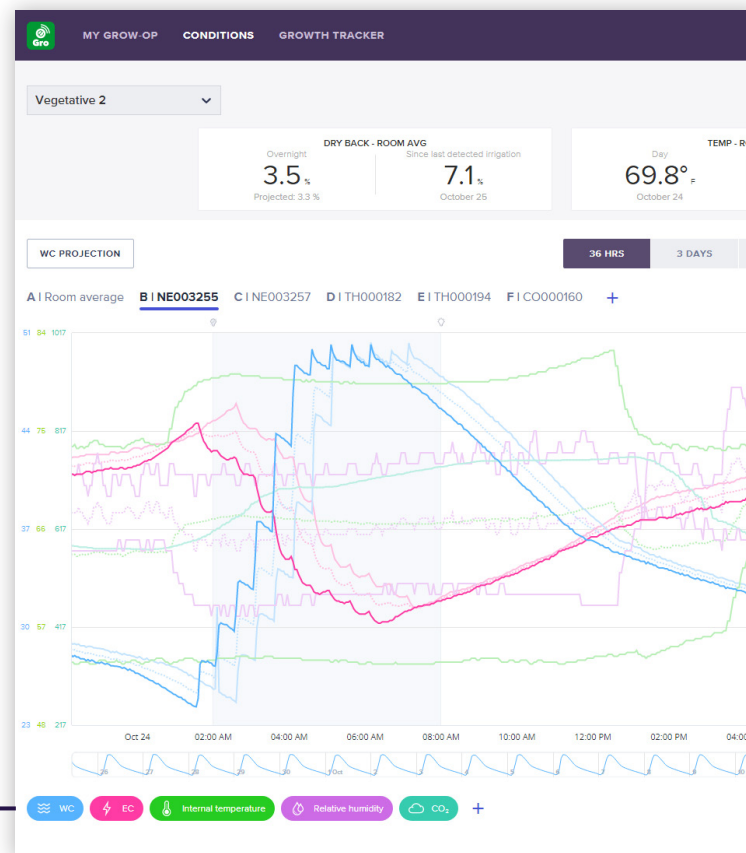
Within the Conditions module, you can now export and download (CSV) your graph data in a more efficient way. The system will notify you as soon as your export is generated. After that, you will see a second notification appear (also in your notification area at the **'bell'** at the right top of your screen) when your file is ready to download. Now simply click on the **'Download'** button to start the download.

Alphanumerical order of sensor names

Endless scrolling through the sensor list is history. The system now alphanumerically orders your (own created) sensor names, instead of using the order of the addition date.

Automatic logout after 10 hours

Due to data security, users are being logged out automatically. But to increase user friendliness we increased the session time to 10 hours.

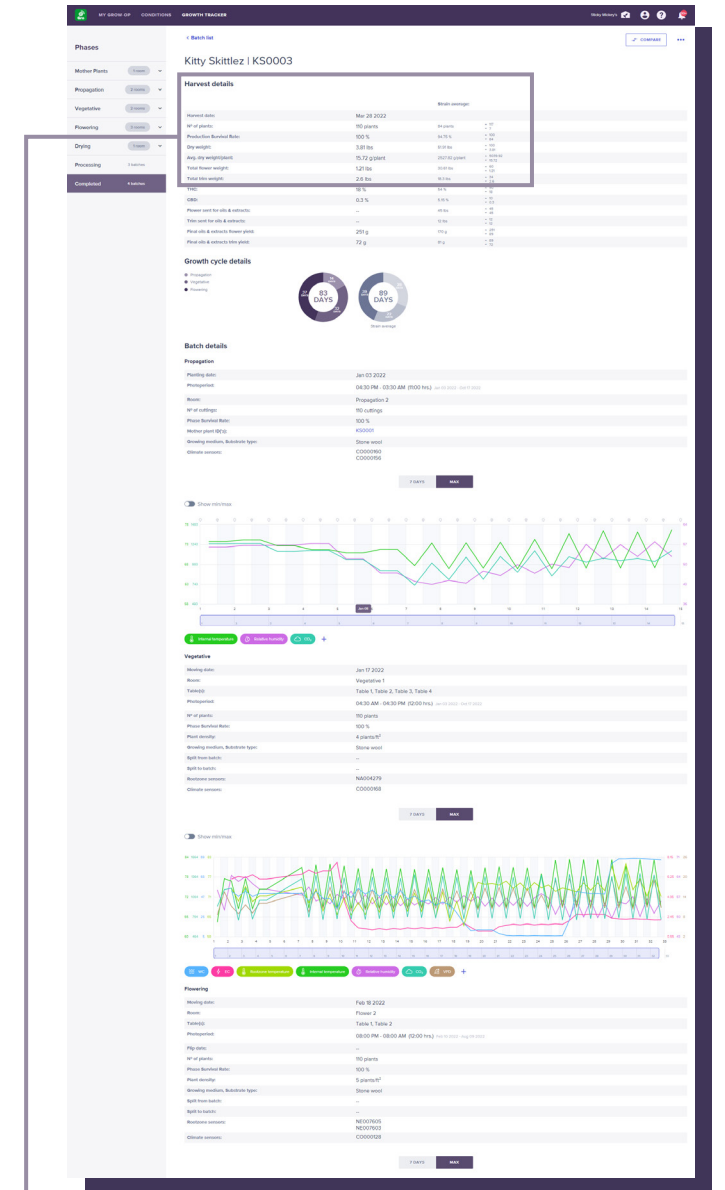


2

Growth Tracker – Survival rates

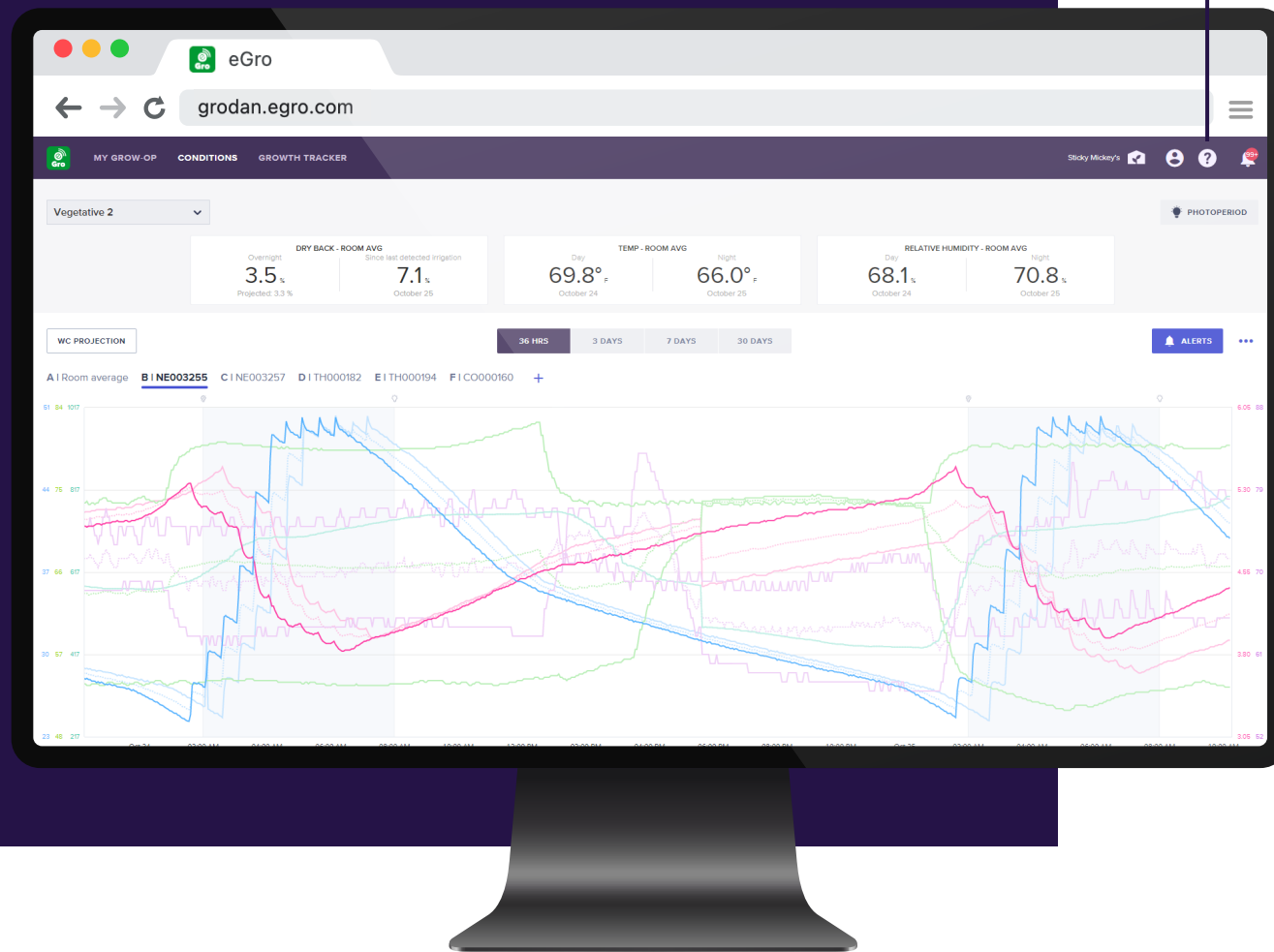
Crop loss significantly impacts the bottom line. We, at Grodan, understand the crucial financial burden of this. Therefore, we have implemented a feature to track the survival rate of your batches, which can serve as a starting point for deeper analysis.

Within the Growth Tracker module, you are now able to compare and analyze the survival rates of your batch by each phase, providing a measure to track the potential impact of your growing conditions in a certain room. Depending on the number of plants in your batch, the data you insert yourself, the software can easily deduce what your survival rate is per phase and production. Phase survival rates provide you with insight into the survival rate of each phase for a batch, while the Production survival rate provides you with the combined average survival rate of the vegetative and flowering phases. Eventually, you can compare the average survival rate with previous batches to find correlations and learn from the differences.



Complemented Support Center

We strive to ensure that you can get the most out of e-Gro software. Based on your valuable input and feedback, we now added two more manuals to the Support Center. Aside from the new additions, the Support Center environment offers you all of the latest features and videos and you can contact us directly with any questions you may have. Simply click on the **question mark icon** at the right top corner of your account to enter the module.



What's next?

Our green experts continuously work on Grodan's e-Gro platform to provide new features to support you with optimizing your growing strategy and maximizing your yield with the highest possible quality. Some more exciting things are in development, especially in the field of Artificial Intelligence (AI) driven tools. For instance, it enables you to predict and project the optimal water strategy based on your situation. In the meantime we continue to work on platform stability and security, making sure your data is always safe when using the platform. We do this by constantly aiming to make a better and user-friendly platform so you can focus on doing what you do best: growing! Stay tuned for the next release.



Part of the ROCKWOOL Group

Grodan

a division of ROCKWOOL
8024 Esquesing Line
Milton, Ontario L9T 6W3
Tel. : 088-872-2476
info@grodan.com
www.grodan.com

Disclaimer: Neither Grodan nor its employees are cultivators or manufacturers of cannabis. Neither GRODAN nor its employees advocate for or encourage the cultivation of marijuana. GRODAN and its employees shall only engage with those state-licensed or state-approved marijuana business who maintain active licenses and constant compliance with the respective state and local licensing authorities.